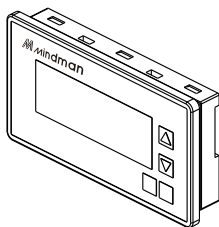




Features:

- Plug-and-Play
- Support start-up screen
- RS-485 Interface
- Full support MA-1188/1189 series controller
- Resolution : 192 × 64 pixels
- Dual watchdog timer
- Surge, EFT and ESD protection
- Brightness : 60cd/m²



Order example:

MATP

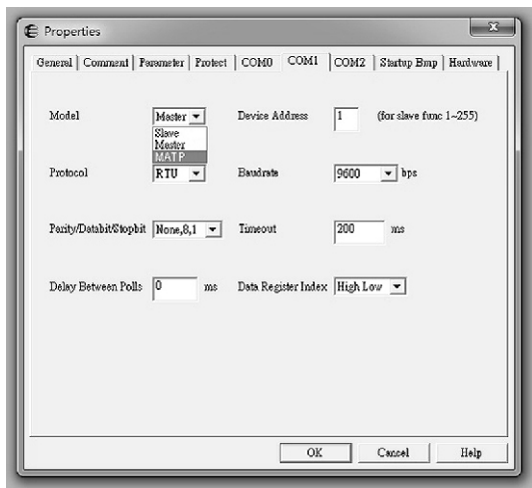
MODEL

Specification:

Model	MATP
Screen type	4.3" STN-LCD
Display color	Monochromatic
Backlight	Automatic turn off time is 5 sec (On = do not turn off)
Resolution	192 × 64 pixels
Display range	96 × 32 mm
Start-up screen size	108 × 64 Bmp
Interface	RS-485
Input power	10 ~ 30 VDC
LCM life	50,000 hours
Brightness	60 cd/m ²
Contrast	Adjustable resistor
Cooling method	Natural air cooling
Operation temperature	-10~+60°C (No freezing)
Storage temperature	-20~+70°C (No freezing)
Size (L×W×H)	158×87×29 mm

Editor Setup :

Connect MATP to Controller and select the COM model to MATP.



Now available adjust program parameter in the MATP without a PC.
And controller will show 'MATP Connect'.

