

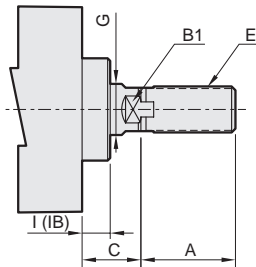
CHANGE OF ROD END SHAPE

Change of rod end shape

MCQA — Standard model no. — XR01

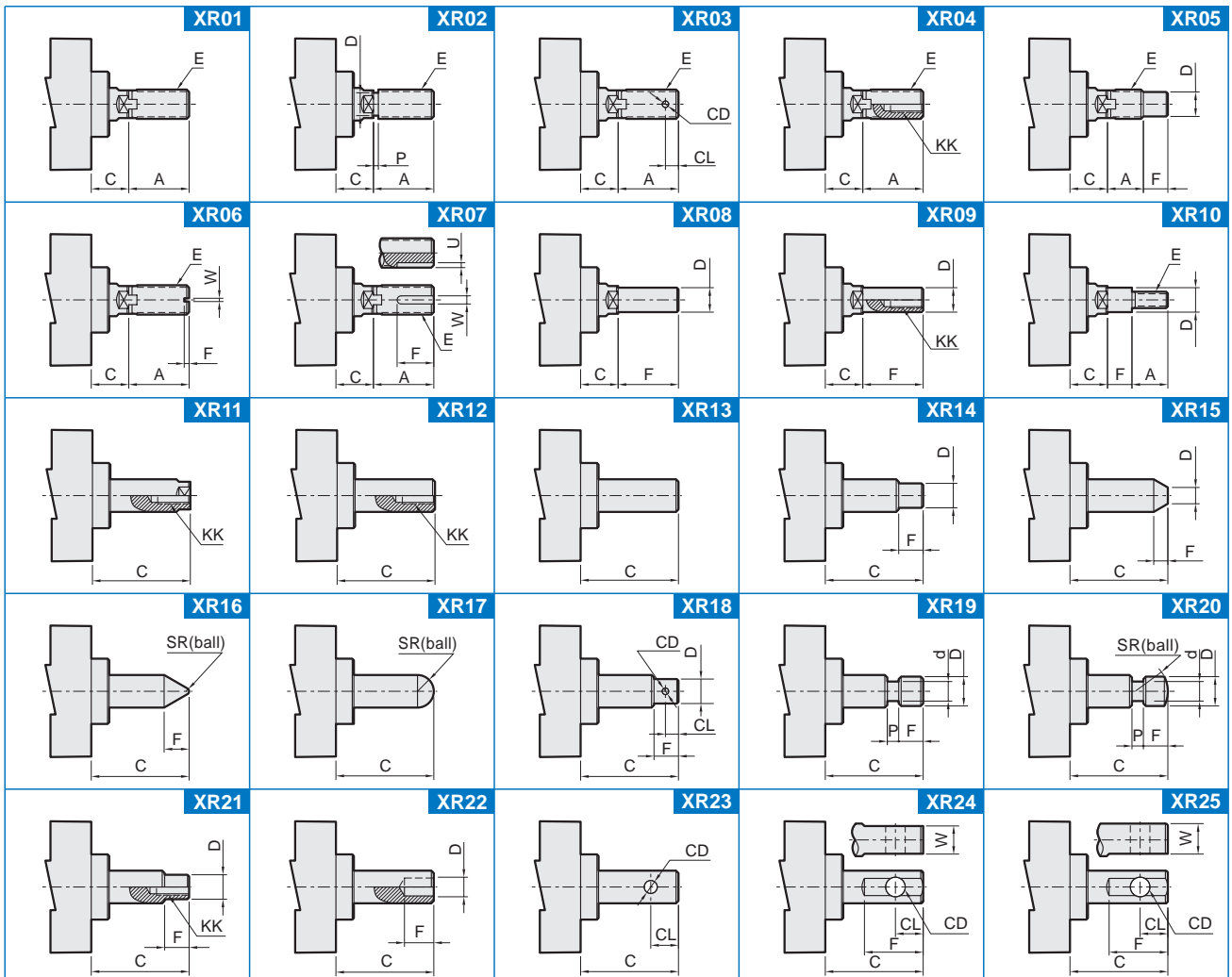
MODEL
MCQA
MCQV2
MCQV
MCQI2

CHANGE OF
ROD END SHAPE



EX: MCQA-11-40-100M-XR01 (A=50, C=35, E=M12 x 1.25)

Model	Tube I.D. (mm)	A	B1	C	E	G	I (IB)
MCQA	40	30	14	21	M14 x 1.5	16	11
	50	35	17	23	M18 x 1.5	20	11
	63	35	17	23	M18 x 1.5	20	11
	80	40	22	31	M22 x 1.5	25	15
	100	40	27	32	M26 x 1.5	30	15
	125	45	30	47	M30 x 1.5	35	32
	150	50	36	47	M30 x 1.5	40	32
MCQV2 MCQI2	32	22	10	26	M10 x 1.25	12	20
	40	24	13	30	M12 x 1.25	16	20.5
	50	32	16	37	M16 x 1.5	20	28
	63	32	16	37	M16 x 1.5	20	26
	80	40	21	46	M20 x 1.5	25	32.5
MCQV	100	40	21	51	M20 x 1.5	25	37.5
	125	54	27	65	M27 x 2.0	32	40
	160	72	36	80	M36 x 2.0	40	55
	200	72	36	95	M36 x 2.0	40	55



Note. The dimensions didn't mark, please consult us.

CHANGE OF ROD END SHAPE

Change of rod end shape

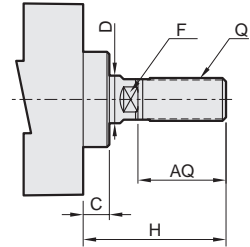
MCJA — Standard model no. — XR01

MODEL

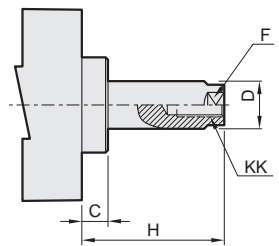
CHANGE OF ROD END SHAPE

EX: MCJA-11-40-100M-XR01
(H=50, AQ=35, Q=M12 x 1.25)

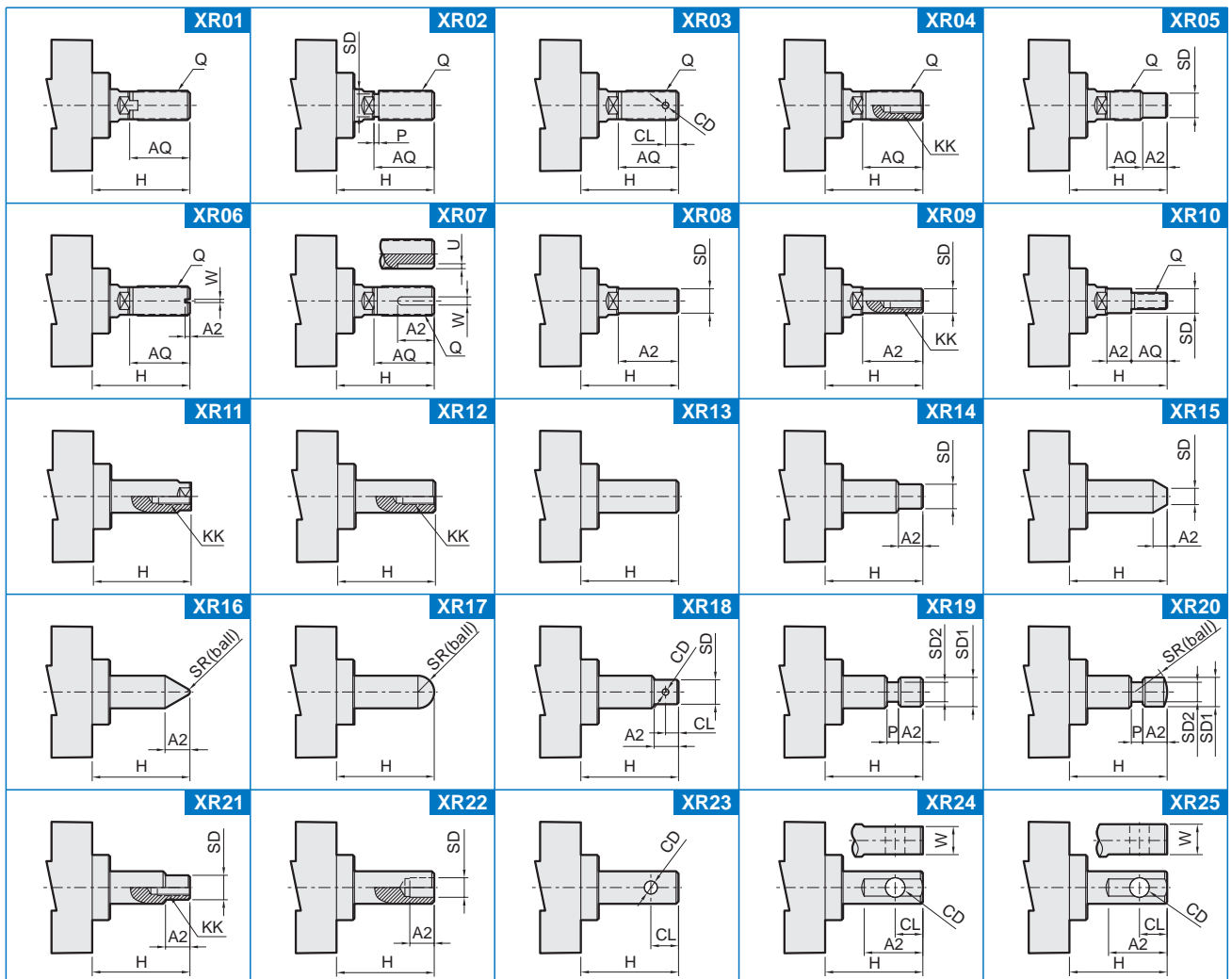
11 : Male thread



12 : Female thread



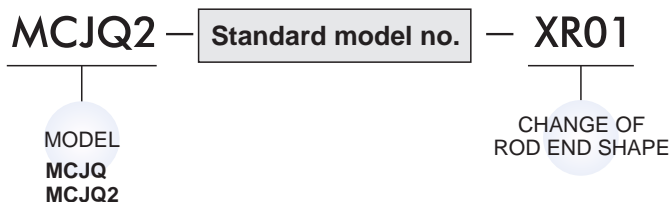
Model	Tube I.D. (mm)	AQ	C	D	F	H		KK	Q
						11: Male thread	12: Female thread		
MCJA	12	12	1	6	5	17	5	M3 x 0.5 x 6 depth	M5 x 0.8
	16	12	1.5	6	5	17.5	5.5	M3 x 0.5 x 6 depth	M5 x 0.8
	20	15	1.5	8	6	20.5	5.5	M4 x 0.7 x 8 depth	M6 x 1.0
	25	17	2	10	8	23	6	M5 x 0.8 x 10 depth	M8 x 1.25
	32	18	3	12	10	25	7	M6 x 1.0 x 12 depth	M10 x 1.25
	40	28	3	16	14	35	7	M8 x 1.25 x 12 depth	M14 x 1.5
	50	28	4	20	17	37	9	M10 x 1.5 x 15 depth	M18 x 1.5
	63	28	4	20	17	37	9	M10 x 1.5 x 15 depth	M18 x 1.5
	80	33	5	25	22	44	11	M14 x 1.5 x 20 depth	M22 x 1.5
	100	38	5	30	27	50	12	M18 x 1.5 x 20 depth	M26 x 1.5



Note. The dimensions didn't mark, please consult us.

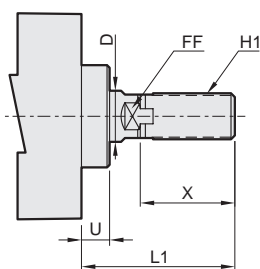
CHANGE OF ROD END SHAPE

Change of rod end shape



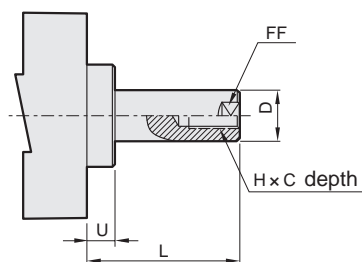
EX: MCJQ-11-40-100M-XR01 (L1=50, X=35, H1=M12 x 1.25)

11 : Male thread



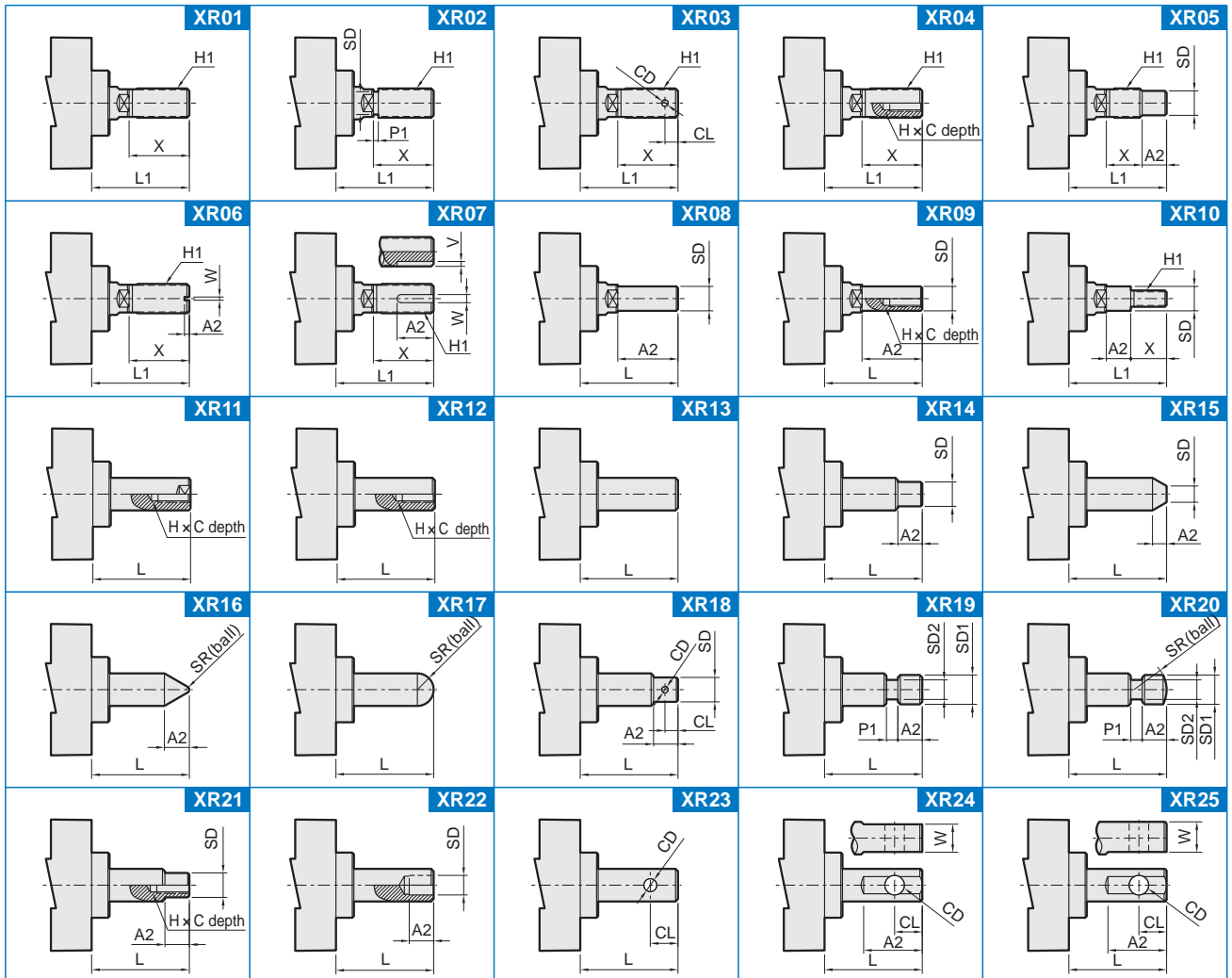
Model	Tube I.D. (mm)	C	D	FF	H	H1	X
MCJQ	12	6	6	5	M3 x 0.5	M5 x 0.8	10.5
	16	8	8	6	M4 x 0.7	M6 x 1.0	12
	20	7	10	8	M5 x 0.8	M8 x 1.25	14
	25	12	12	10	M6 x 1.0	M10 x 1.25	17.5
	32	13	16	14	M8 x 1.25	M14 x 1.5	23.5
	40	13	16	14	M8 x 1.25	M14 x 1.5	23.5
	50	15	20	17	M10 x 1.5	M18 x 1.5	28.5
	63	15	20	17	M10 x 1.5	M18 x 1.5	28.5
	80	21	25	22	M16 x 2.0	M22 x 1.5	35.5
100	27	30	27	M20 x 2.5	M26 x 1.5	35.5	
MCJQ2	12	6	6	5	M3 x 0.5	M5 x 0.8	10.5
	16	8	8	6	M4 x 0.7	M6 x 1.0	12
	20	10	10	8	M5 x 0.8	M8 x 1.25	14
	25	12	12	10	M6 x 1.0	M10 x 1.25	17.5

12 : Female thread



Model	Tube I.D. (mm)	Standard stroke			Long stroke				
		Stroke range	L	L1	U	Stroke range	L	L1	U
MCJQ	12	5~30	3.5	14		35~100	13.5	24	
	16	5~30	3.5	15.5		35~100	13.5	25.5	
	20	5~50	4.5	18.5		75~200	14.5	28.5	
	25	5~50	5	22.5		75~300	15	32.5	
	32	5~100	7	28.5		125~300	17	38.5	5
	40	5~100	7	28.5		125~300	17	38.5	5
	50	5~100	8	33.5		125~300	18	43.5	5
	63	5~100	8	33.5		125~300	18	43.5	5
	80	5~100	10	43.5		125~300	20	53.5	5
100	5~100	12	43.5		125~300				
MCJQ2	12	5~30	3.5	14		X			
	16	5~30	3.5	15.5					
	20	5~50	4.5	18.5					
	25	5~50	5	22.5					

Change of rod end shape



Note. The dimensions didn't mark, please consult us.

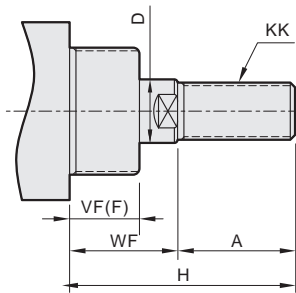
CHANGE OF ROD END SHAPE

Change of rod end shape

MCMA — Standard model no. — XR01

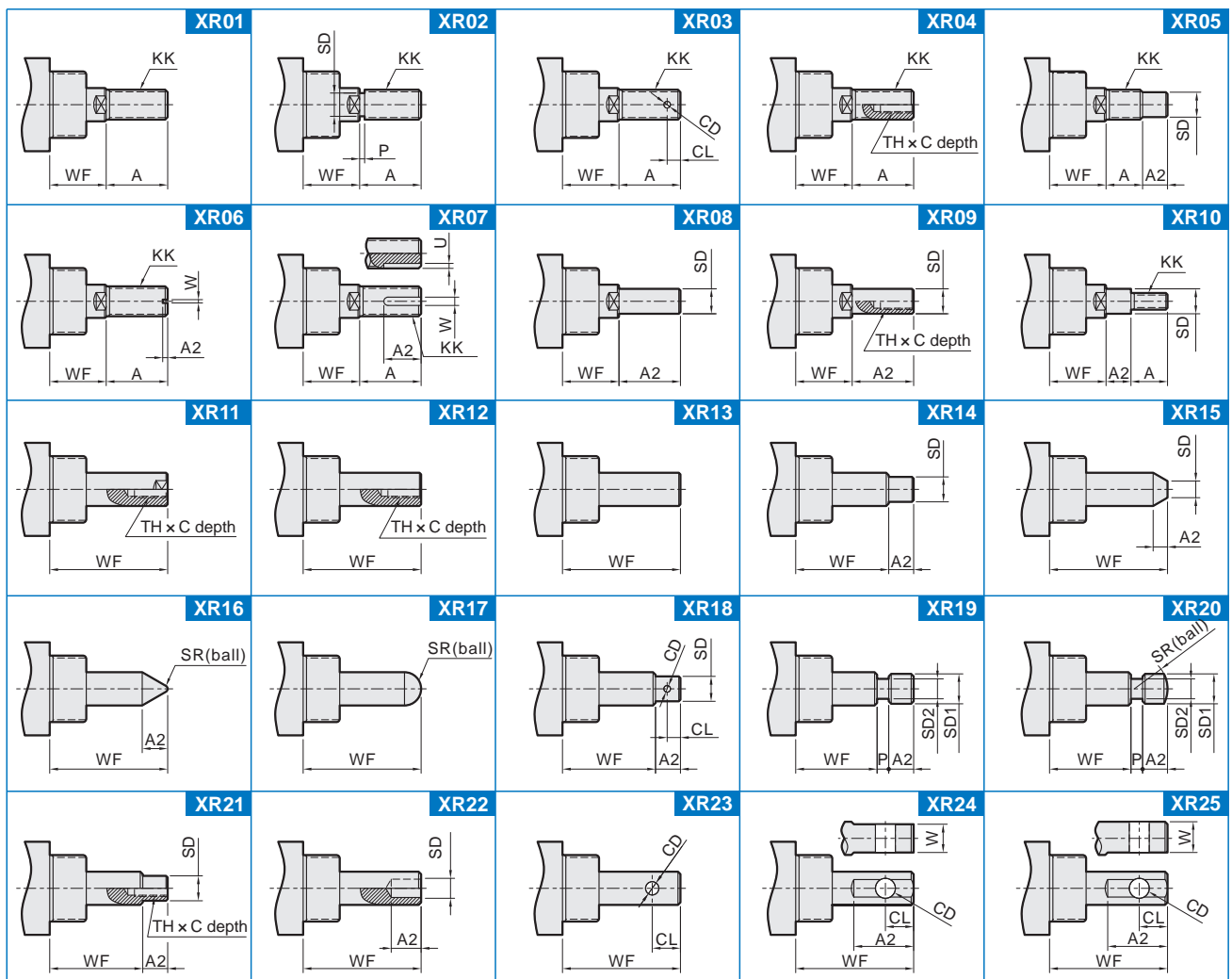
MODEL
MCMA
MCMB
MCMJ

CHANGE OF
ROD END SHAPE



Model	Tube I.D. (mm)	A	D	WF	KK	VF(F)	H
MCMA	16	16	6	22	M6 × 1.0	12	—
	20	20	8	18	M8 × 1.25	12	—
	25	22	10	27	M10 × 1.25	15	—
	32	22	12	30	M10 × 1.25	18	—
	40	30	14	27	M12 × 1.25	17	—
MCMB	20	18	8	—	M8 × 1.25	13	41
	25	22	10	—	M10 × 1.25	13	45
	32	22	12	—	M10 × 1.25	13	45
	40	24	14	—	M14 × 1.5	16	50
MCMJ	8	12	4	16	M4 × 0.7	12	—
	10	12	4	16	M4 × 0.7	12	—
	12	16	6	22	M6 × 1.0	17	—
	16	16	6	22	M6 × 1.0	18	—
	20	20	8	24	M8 × 1.25	20	—
MCMJ	25	22	10	28	M10 × 1.25	22	—
	6	15	3	—	M3 × 0.5	8	28
	10	15	4	—	M4 × 0.7	8	28
MCMJ	16	15	5	—	M5 × 0.8	8	28

EX: MCMA-11-32-100-XR01 (A=50, WF=35, KK=M12 × 1.25)



Note. The dimensions didn't mark, please consult us.

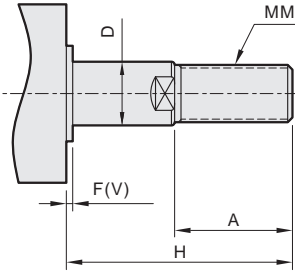
CHANGE OF ROD END SHAPE

Change of rod end shape

MCCG — Standard model no. — XR01

MODEL
MCCG
MCCN

CHANGE OF
ROD END SHAPE



Model	Tube I.D. (mm)	A	D	MM	F(V)	H
MCCG (mm)	20	18	8	M8 × 1.25	2	35
	25	22	10	M10 × 1.25	2	40
	32	22	12	M10 × 1.25	2	40
	40	30	16	M14 × 1.5	2	50
	50	35	20	M18 × 1.5	2	58
	63	35	20	M18 × 1.5	2	58
MCCN (inch)	20	0.50	0.315	1/4-28 UNF	0.08	—
	25	0.50	0.394	5/16-24 UNF	0.08	—
	32	0.75	0.472	7/16-20 UNF	0.08	—
	40	0.75	0.630	7/16-20 UNF	0.08	—
	50	0.88	0.787	1/2-20 UNF	0.08	—
	63	0.88	0.787	1/2-20 UNF	0.08	—

EX: MCCG-11-40-100M-XR01 (A=50, H=90, KK=M12 × 1.25)

XR01	XR02	XR03	XR04	XR05
XR06	XR07	XR08	XR09	XR10
XR11	XR12	XR13	XR14	XR15
XR16	XR17	XR18	XR19	XR20
XR21	XR22	XR23	XR24	XR25

Note. The dimensions didn't mark, please consult us.