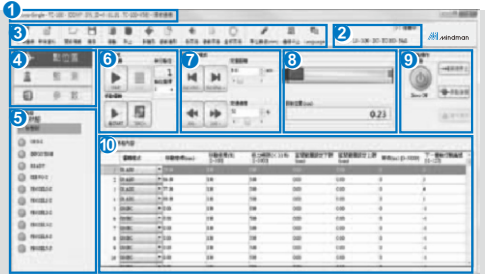


■ Main page-position points



1 Basic status bar

Display current system status, from left to right, product name, software name, communication port, station ID, firmware version, software version and connection status.

2 Model and controller status

Display current robot model and controller status.

3 Toolbar

The toolbar contains: new connection, new data file, open data file, save, copy, paste, read position point list, read parameters, overwrite position point list, overwrite parameter, overwrite all, display unit change and disconnect.

4 Function page selection

To select the setting of position points, monitoring and parameters.

5 Output monitoring

Display current output from controller and alarm status.

6 Automatic operation

Proceed with the selected position points automatically.

Operating point

Display current position point.

Manual operation

Proceed with the selected position points automatically. (suggest to use when confirming the teaching).

7 Manual operation

Proceed with JOGGING and INCHING.

8 Current position

Display the current position.

Simulation display

Simulate the movement of current hardware.

9 SERVO/ORG control

Control servo ON or OFF, returning to the ORG, deceleration, stop and alarm reset.

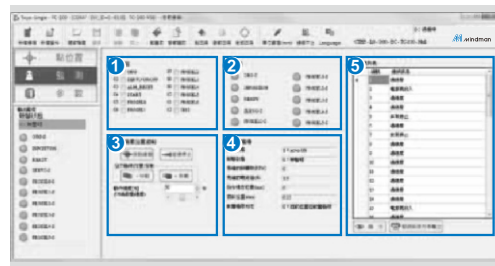
10 Position point list

Set position point moving mode, speed, torque, dwell time and next step.

Basic specification

Specification	O/S
OS	Microsoft Windows 2000/XP/Vista/7/8.1
CPU	Meet the requirement of the O/S
Memory	Meet the requirement of the O/S
Free HD space	20MB or above free space
Communication ports	RS485, USB
compatible controller	TC100

■ Monitoring page



1 Input monitoring

Monitoring all input signal and all signal is forced to output.

2 Output monitoring

Monitoring all output signal but cannot be forced to output to other device.

3 Position and pushing position control

Torque limit movement control.

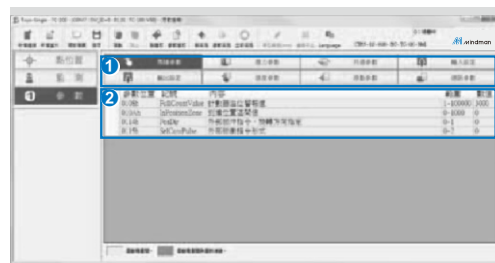
4 Motor status monitoring

Monitoring the motor status, such as current, rotation speed, current position and alarm status...etc.

5 Alarm log

Display the last 50 alarm, the latest one is on top.

■ Parameters page



1 List of parameters

- Parameters of motor
- Parameters of thrust
- Common parameters
- Setting of input
- Setting of output
- Speed parameters
- Parameters of homing
- Parameters of communication setting

2 Parameter content

The content is including the name, description and the of parameters, description and setting value of parameters.