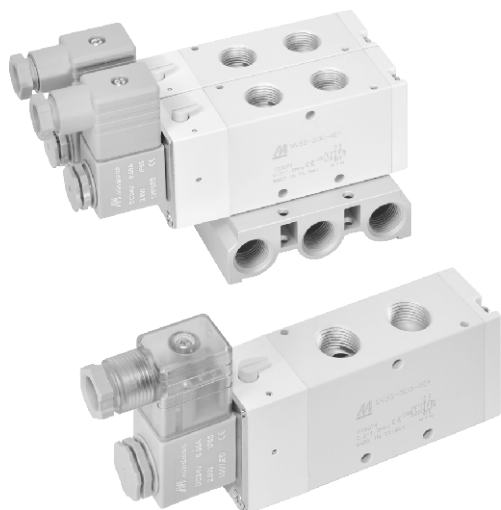


# MVSE-300 series

## SOLENOID VALVE



### Specification



Model	4E1	4E2	4E2C.P.R
Bore No.	10A		
Port size	Rc3/8		
No. of port	5		
No. of position	2	3	
Medium	Air		
Operating pressure range	0.2~1.2 MPa	0.3~1.2 MPa	
Proof pressure	1.5 MPa		
Effective orifice	35 mm <sup>2</sup>	34.5 mm <sup>2</sup>	
Response time	50 ms		
Ambient temperature	-5~+50°C (No freezing)		
Voltage	AC110V, AC220V (50/60)Hz, DC24V		
Power consumption	AC=6/4.9VA, DC=2.5W		
Available voltage range	± 10%		
Insulation class	F class		
Weight	406 g	508 g	577 g

### Order example of valve

MVSE – 300 – 4E2C – AC110 – L – G

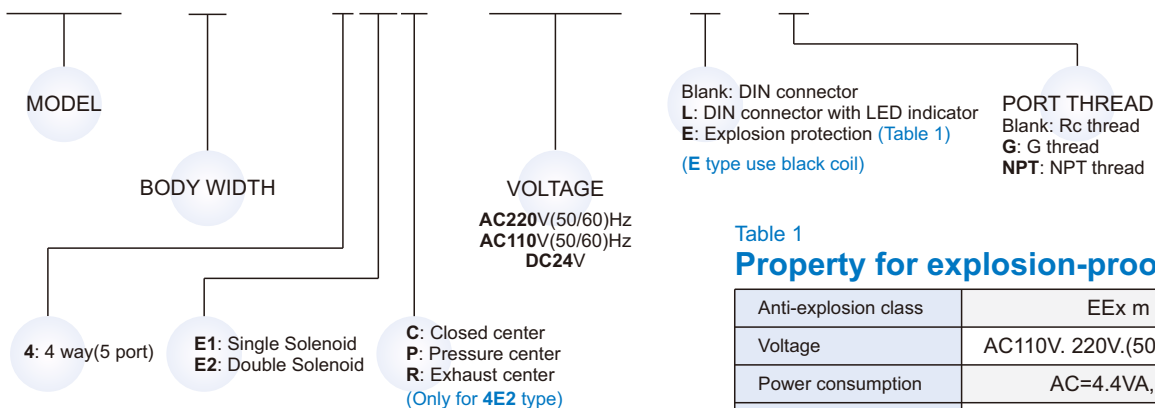
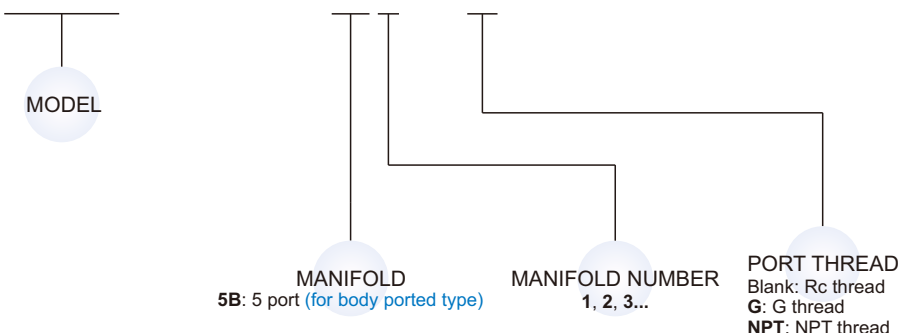


Table 1  
Property for explosion-proof type

Anti-explosion class	EEx m II T4
Voltage	AC110V, 220V, (50/60)Hz, DC24V.
Power consumption	AC=4.4VA, DC=5W
Available voltage range	± 10%
Insulation class	F class

### Order example of manifold

MVSE – 300 – 5B3 – G

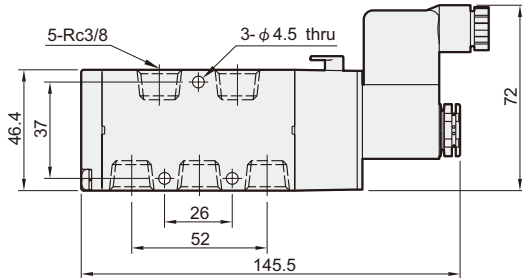
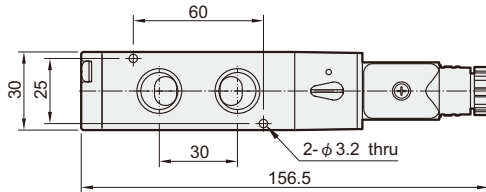
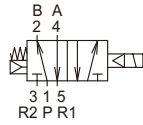


# MVSE-300 Dimensions

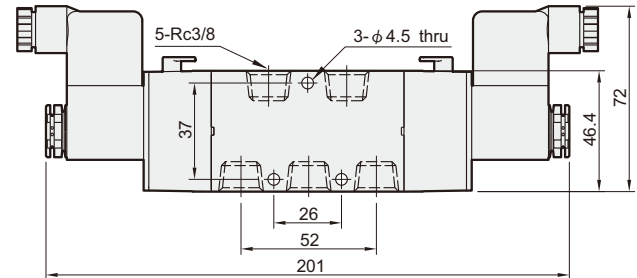
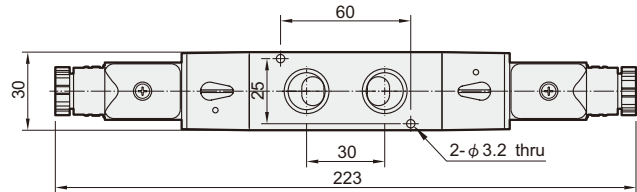
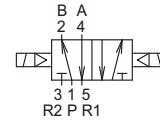
## SOLENOID VALVE



**MVSE-300-4E1**



**MVSE-300-4E2**

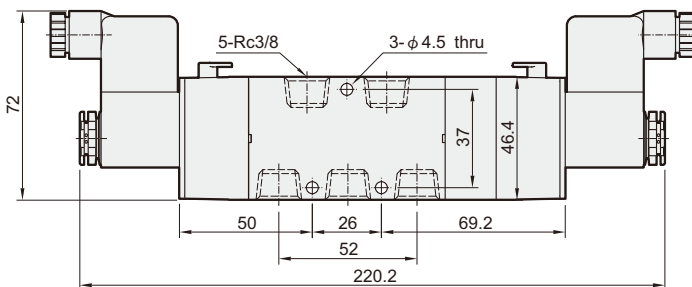
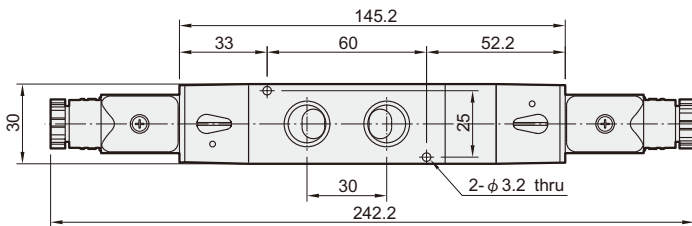
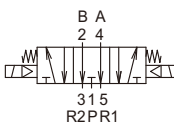
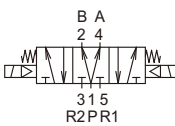
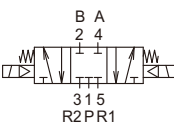


**MVSE-300-4E2C.P.R**

**MVSE-300-4E2C**

**MVSE-300-4E2P**

**MVSE-300-4E2R**



### Flow features

