

### Specification

Model	MVFA-230	MVFA-231	MVFA-240
Bore No.	8A		
Port size	Rc1/4		
No. of port	3	4	
No. of position	2		
Medium	Air		
Operating pressure range	0~0.7 MPa		
Proof pressure	1 MPa		
Effective orifice	8 mm <sup>2</sup>		
Ambient temperature	- 5~ + 60°C (No freezing)		
Weight (with protection)	684 (1426) g	739 (1481) g	774 (1516) g



### Order example

MVFA - 230 - 8A - P L - G

MODEL

8A: Rc1/4

P: With protection  
L: With lock

PORT THREAD  
Blank: Rc thread  
G: G thread  
NPT: NPT thread

230: 3/2 NC  
231: 3/2 NO  
240: 4/2

MVFA-230-8A-(L)

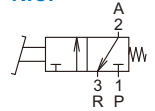
MVFA-231-8A-(L)

MVFA-230-8A-P(L)

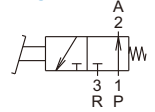
MVFA-231-8A-P(L)

#### MVFA-230 / 231

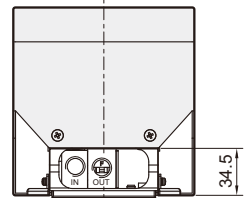
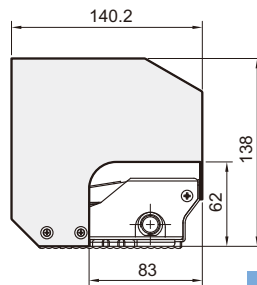
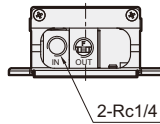
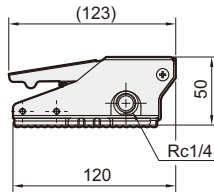
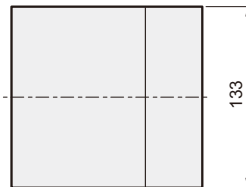
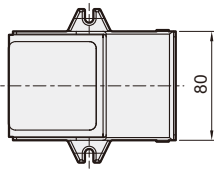
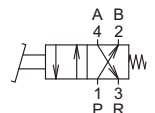
N.C.



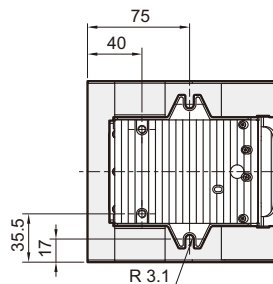
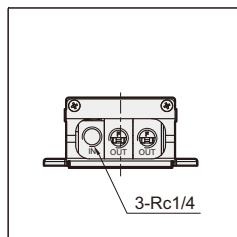
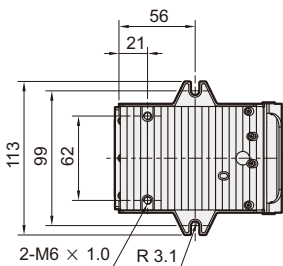
N.O.



#### MVFA-240



#### MVFA-240-8A-(L)



#### MVFA-240-8A-P(L)

