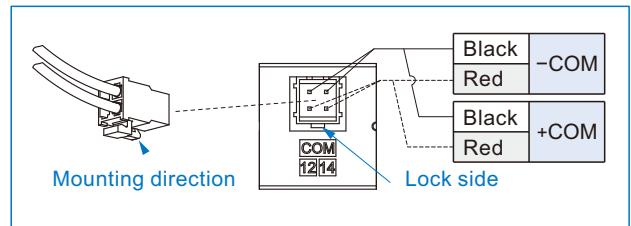


Specification

- 25 Pin D-sub connector (cable length 3m).
- Simple electric wire system.

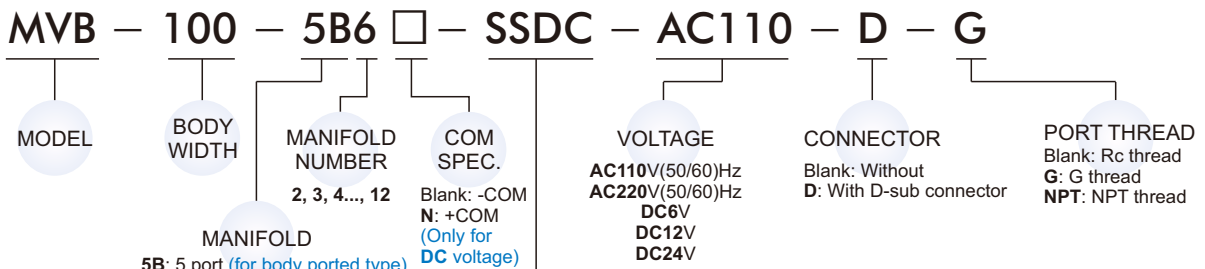
Remark

- Maximum number of stations
4E1: 12 stations
4E2 & 4E2C.P.R: 11 stations
- For MVSY-100 series solenoid valve only.



- ※ -COM規格需對應PLC(PNP輸出)之機型。
- ※ +COM規格需對應PLC(NPN輸出)之機型。

Order example (Multi connector system)

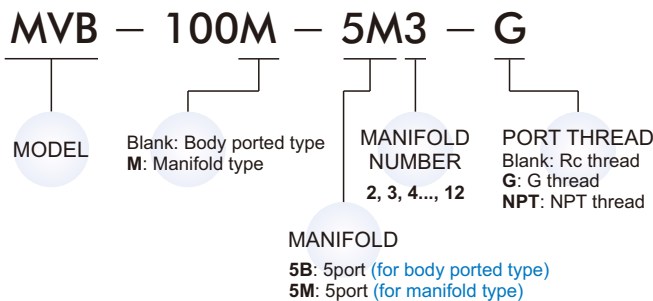


SOLENOID VALVE

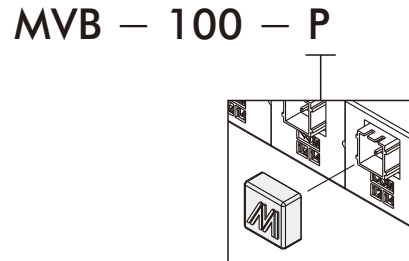
S	4E1- 5/2 Single solenoid
D	4E2- 5/2 Double solenoid
C	4E2C- 5/3 Double solenoid
P	4E2P- 5/3 Double solenoid
R	4E2R- 5/3 Double solenoid

※ Valves are assembled from the D-sub side.

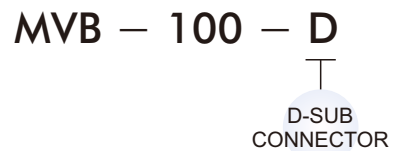
Order example of circuit board and manifold



Order example of protective plate



Order example of connector



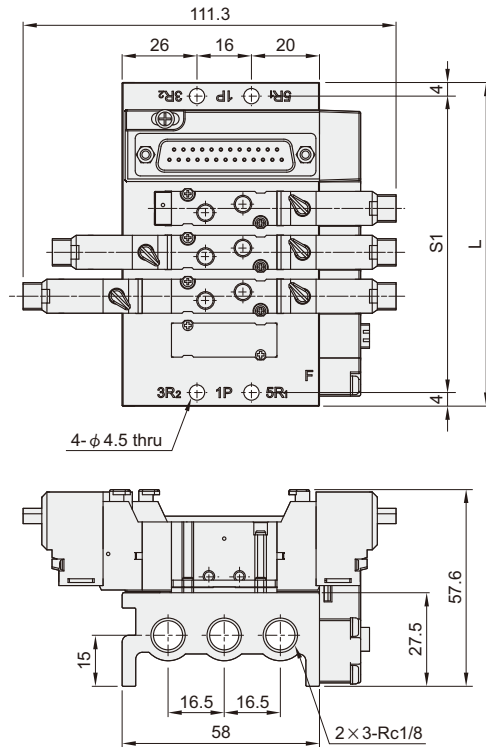
MVB-100 Dimensions

MULTI CONNECTOR SYSTEM



MVB-100-5B*

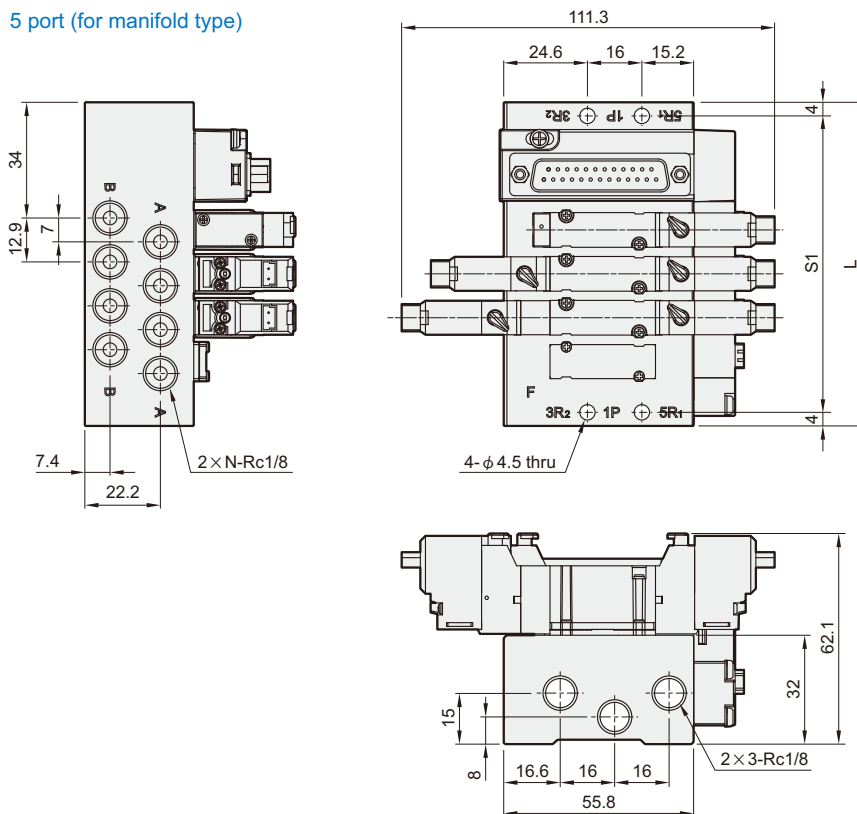
5 port (for body ported type)



No. of stations	L	S1
2	79.5	69.5
3	97	87
4	114.5	104.5
5	132	122
6	149.5	139.5
7	167	157
8	184.5	174.5
9	202	192
10	219.5	209.5
11	237	227
12	254.5	244.5

MVB-100M-5M*

5 port (for manifold type)



No. of stations(N)	L	S1
2	69.3	61.3
3	82.2	74.2
4	95.1	87.1
5	108	100
6	120.9	112.9
7	133.8	125.8
8	146.7	138.7
9	159.6	151.6
10	172.5	164.5
11	185.4	177.4
12	198.3	190.3

MVB-100/156 Order example

MULTI CONNECTOR SYSTEM



Mindman

Order example of wire ※ MVB-100 and MVB-156 use the same accessories.

MVB - 100 - □ - WA2E1

MODEL

COM SPEC

Blank: -COM
N: +COM
(Only for DC voltage)

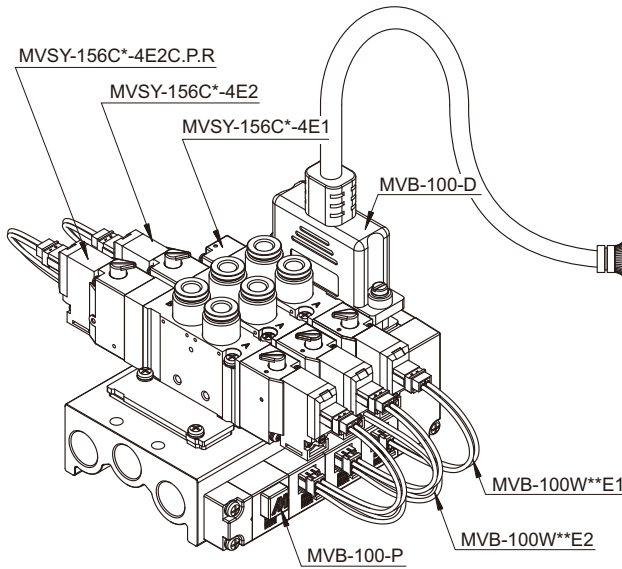
VOLTAGE

A2: AC220V(50/60)Hz
A1: AC110V(50/60)Hz
D: DC24V/12V/6V

WIRE TYPE

E1: for 4E1 valves
E2: for 4E2 valves

25 PIN



- D-01
- D-02
- D-03
- D-04
- D-05
- D-06
- D-07
- D-08
- D-09
- D-10
- D-11
- D-12
- D-13
- D-14
- D-15
- D-16
- D-17
- D-18
- D-19
- D-20
- D-21
- D-22
- D-23
- COM
- COM

Wire color	Pin No.	Coil No.
Brown	1	D-01
Purple / black	14	D-02
Brown / black	2	D-03
Grey	15	D-04
Red	3	D-05
Grey / black	16	D-06
Red / black	4	D-07
White	17	D-08
Orange	5	D-09
White / black	18	D-10
Orange / black	6	D-11
Pink	19	D-12
Yellow	7	D-13
Pink / black	20	D-14
Yellow / black	8	D-15
Light purple	21	D-16
Green	9	D-17
Light purple / black	22	D-18
Green / black	10	D-19
Light blue	23	D-20
Blue	11	D-21
Light blue / black	24	D-22
Blue / black	12	D-23
Purple	13	COM
Light green	25	COM

MVB-100-W**E1

MVB-100-W**E2

