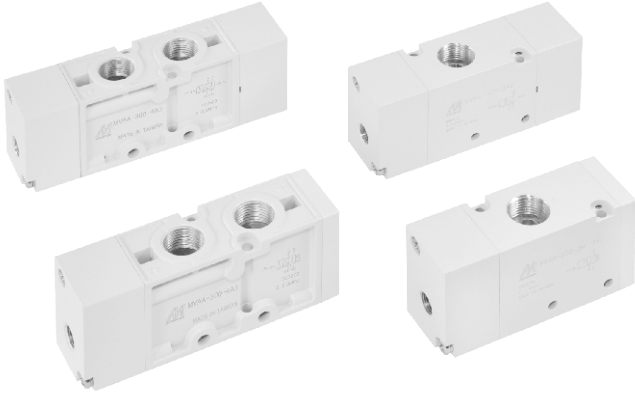


MVAA-300 series

PILOT VALVE



Mindman

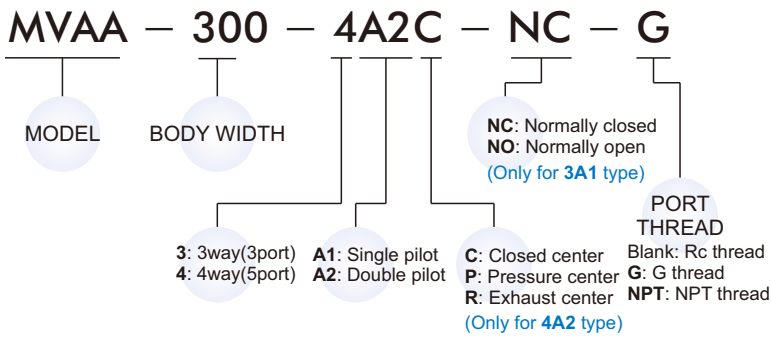


Specification

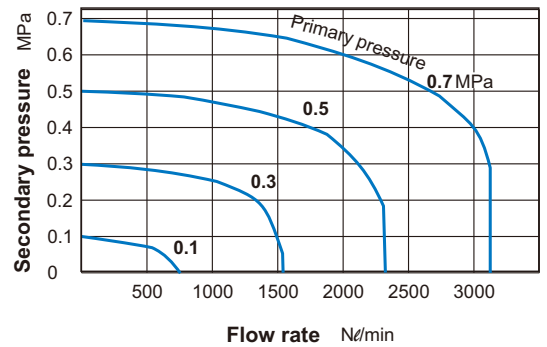
| Model | 3A1 | 3A2 | 4A1 | 4A2 | 4A2C.PR |
|--------------------------|---------------------------|-------|-------|-------|---------|
| Bore No. | 10A | | | | |
| Port size | Rc3/8 | | | | |
| No. of port | 3 | | | 5 | |
| Medium | Air | | | | |
| Operating pressure range | 0~0.8 MPa | | | | |
| Proof pressure | 1 MPa | | | | |
| Effective orifice | 35 mm ² | | | | |
| Pilot pressure range | (0.34 × P* + 0.1)~0.8 MPa | | | | |
| Ambient temperature | -5~+60°C (No freezing) | | | | |
| Weight | 295 g | 324 g | 236 g | 301 g | 501 g |

※ P: Operating pressure.

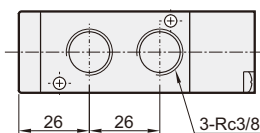
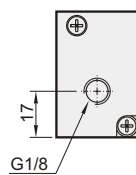
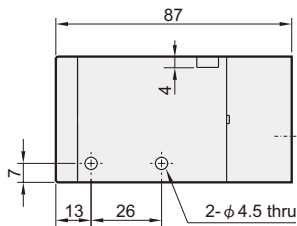
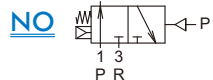
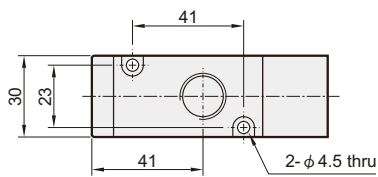
Order example



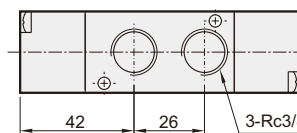
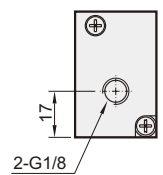
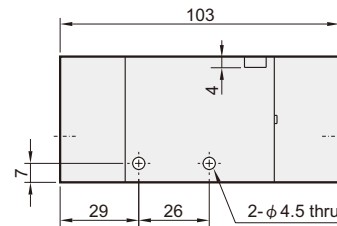
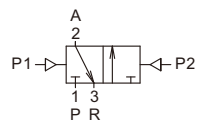
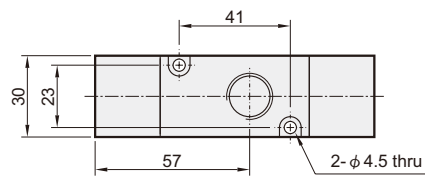
Flow features



MVAA-300-3A1-NC/NO



MVAA-300-3A2

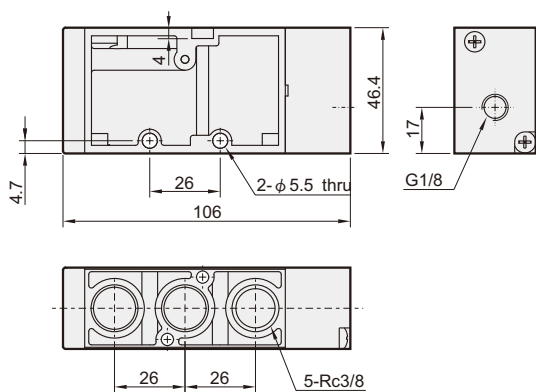
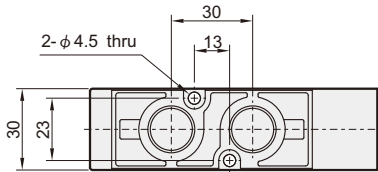
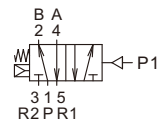


MVAA-300 Dimensions

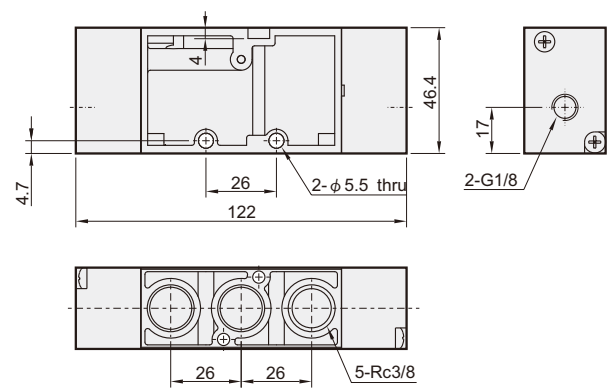
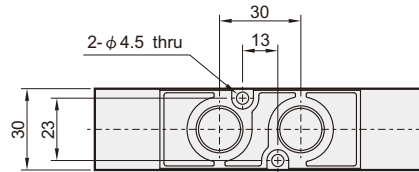
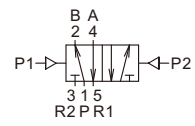
PILOT VALVE



MVAA-300-4A1



MVAA-300-4A2



MVAA-300-4A2C.PR

MVAA-300-4A2C

MVAA-300-4A2P

MVAA-300-4A2R

