

Specification

※ Port thread G. NPT. are also available.

Model	Acting	Port size	Port no. / Position	Medium	Operating pressure range	Ambient temperature	Weight
ACT-401-02	Spring return type	Rc1/4	5/2	Air	0~0.9 MPa	-0~+60℃	380 g
ACT-401-03	Spring return type	Rc3/8	5/2	Air	0~0.9 MPa	-0~+60℃	363 g
ACT-401-02-3A	Automatic return type (Closed center)	Rc1/4	5/3	Air	0~0.9 MPa	-0~+60℃	385 g
ACT-401-03-3A	Automatic return type (Closed center)	Rc3/8	5/3	Air	0~0.9 MPa	-0~+60℃	368 g
ACT-401-02-3A1	Automatic return (Exhaust center)	Rc1/4	5/3	Air	0~0.9 MPa	-0~+60℃	385 g
ACT-401-03-3A1	Automatic return (Exhaust center)	Rc3/8	5/3	Air	0~0.9 MPa	-0~+60℃	368 g
ACT-402-02	Spring return type	Rc1/4	5/2	Air	0~0.9 MPa	-0~+60℃	357 g
ACT-402-03	Spring return type	Rc 3/8	5/2	Air	0~0.9 MPa	-0~+60℃	340 g
ACT-403-02	Spring return type	Rc1/4	5/2	Air	0~0.9 MPa	-0~+60℃	587 g
ACT-403-03	Spring return type	Rc3/8	5/2	Air	0~0.9 MPa	-0~+60℃	570 g
ACT-405-02	Spring return type	Rc1/4	5/2	Air	0~0.9 MPa	-0~+60℃	370 g
ACT-405-03	Spring return type	Rc3/8	5/2	Air	0~0.9 MPa	-0~+60℃	353 g
ACT-406-02	Pilot return type	Rc1/4	5/2	Air	0~0.9 MPa	-0~+60℃	352 g
ACT-406-03	Pilot return type	Rc3/8	5/2	Air	0~0.9 MPa	-0~+60℃	334 g
ACT-407-02	Pilot return type	Rc1/4	5/2	Air	0~0.9 MPa	-0~+60℃	628 g
ACT-407-03	Pilot return type	Rc3/8	5/2	Air	0~0.9 MPa	-0~+60℃	606 g
ACT-410-02	Hand return type	Rc1/4	5/2	Air	0~0.9 MPa	-0~+60℃	346 g
ACT-410-03	Hand return type	Rc3/8	5/2	Air	0~0.9 MPa	-0~+60℃	330 g
ACT-410-02-3	Hand return type (Closed center)	Rc1/4	5/3	Air	0~0.9 MPa	-0~+60℃	346 g
ACT-410-03-3	Hand return type (Closed center)	Rc3/8	5/3	Air	0~0.9 MPa	-0~+60℃	330 g
ACT-410-02-31	Hand return (Exhaust center)	Rc1/4	5/3	Air	0~0.9 MPa	-0~+60℃	346 g
ACT-410-03-31	Hand return (Exhaust center)	Rc3/8	5/3	Air	0~0.9 MPa	-0~+60℃	330 g
ACT-411-02	Hand return type	Rc1/4	5/2	Air	0~0.9 MPa	-0~+60℃	346 g
ACT-411-03	Hand return type	Rc3/8	5/2	Air	0~0.9 MPa	-0~+60℃	330 g
ACT-411-02-3	Hand return type	Rc1/4	5/3	Air	0~0.9 MPa	-0~+60℃	620 g
ACT-411-03-3	Hand return type	Rc3/8	5/3	Air	0~0.9 MPa	-0~+60℃	603 g
ACT-411-02-3A	Automatic return type (Closed center)	Rc1/4	5/3	Air	0~0.9 MPa	-0~+60℃	658 g
ACT-411-03-3A	Automatic return type (Closed center)	Rc3/8	5/3	Air	0~0.9 MPa	-0~+60℃	640 g
ACT-411-02-3A1	Automatic return (Exhaust center)	Rc1/4	5/3	Air	0~0.9 MPa	-0~+60℃	658 g
ACT-411-03-3A1	Automatic return (Exhaust center)	Rc3/8	5/3	Air	0~0.9 MPa	-0~+60℃	640 g
ACT-412-02	Hand return type	Rc1/4	5/2	Air	0~0.9 MPa	-0~+60℃	342 g
ACT-412-03	Hand return type	Rc3/8	5/2	Air	0~0.9 MPa	-0~+60℃	325 g
ACT-301-02	Spring return type	Rc1/4	3/2	Air	0~0.9 MPa	-0~+60℃	318 g
ACT-302-02	Spring return type	Rc1/4	3/2	Air	0~0.9 MPa	-0~+60℃	296 g
ACT-303-02	Spring return type	Rc1/4	3/2	Air	0~0.9 MPa	-0~+60℃	520 g
ACT-305-02	Spring return type	Rc1/4	3/2	Air	0~0.9 MPa	-0~+60℃	305 g
ACT-306-02	Pilot return type	Rc1/4	3/2	Air	0~0.9 MPa	-0~+60℃	288 g
ACT-307-02	Pilot return type	Rc1/4	3/2	Air	0~0.9 MPa	-0~+60℃	564 g
ACT-310-02	Hand return type	Rc1/4	3/2	Air	0~0.9 MPa	-0~+60℃	282 g
ACT-311-02	Hand return type	Rc1/4	3/2	Air	0~0.9 MPa	-0~+60℃	555 g
ACT-312-02	Hand return type	Rc1/4	3/2	Air	0~0.9 MPa	-0~+60℃	270 g

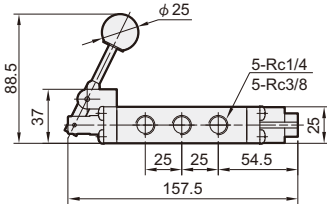
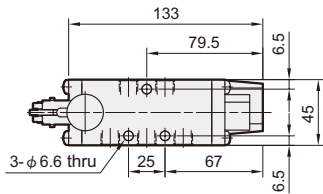
Model	No. of port	Bore size	Medium	Operation pressure range	Ambient temperature	Weight
EPA-100 / 100A	3	Rc1/8	Air	0~0.9 MPa	-5~+60℃ (No freezing)	43 g / 68 g
EPA-101 / 101A	3	Rc1/8	Air	0~0.9 MPa	-5~+60℃ (No freezing)	70 g / 68 g
EPA-102	3	Rc1/8	Air	0~0.9 MPa	-5~+60℃ (No freezing)	104 g
EPA-103	3	Rc1/8	Air	0~0.9 MPa	-5~+60℃ (No freezing)	67 g
EPA-104	3	Rc1/8	Air	0~0.9 MPa	-5~+60℃ (No freezing)	71 g
EPA-105	3	Rc1/8	Air	0~0.9 MPa	-5~+60℃ (No freezing)	68 g
EPA-105L	3	Rc1/8	Air	0~0.9 MPa	-5~+60℃ (No freezing)	104 g
EPA-106	3	Rc1/8	Air	0~0.9 MPa	-5~+60℃ (No freezing)	61 g
EPA-107	3	Rc1/8	Air	0~0.9 MPa	-5~+60℃ (No freezing)	54 g
EPA-108*	3	Rc1/8	Air	0~0.9 MPa	-5~+60℃ (No freezing)	100 g
EPA-109	3	Rc1/8	Air	0~0.9 MPa	-5~+60℃ (No freezing)	108 g

Hand valve

ACT-401

ACT-401-02 / 02-3A
ACT-401-03 / 03-3A

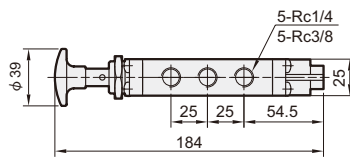
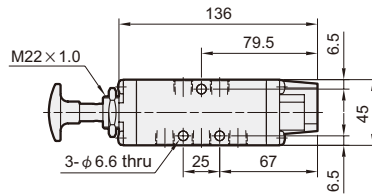
ACT-401-02-3A1
ACT-401-03-3A1



Plam valve

ACT-402

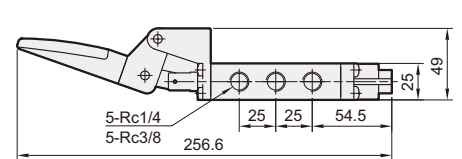
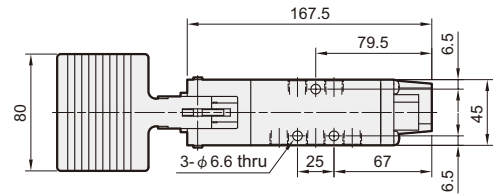
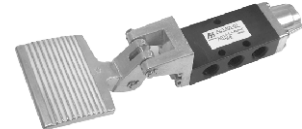
ACT-402-02
ACT-402-03



Pedal valve

ACT-403

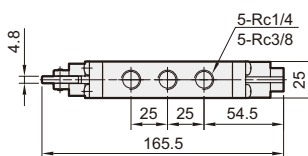
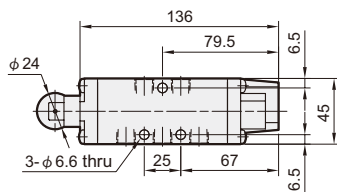
ACT-403-02
ACT-403-03



Roller plunger valve

ACT-405

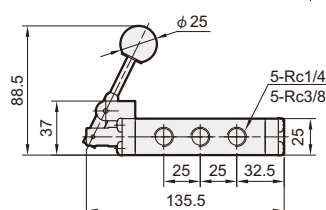
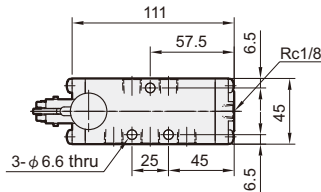
ACT-405-02
ACT-405-03



Hand valve

ACT-406

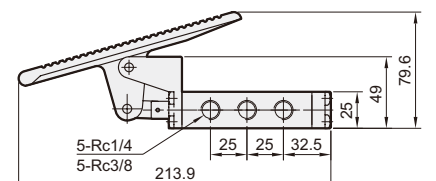
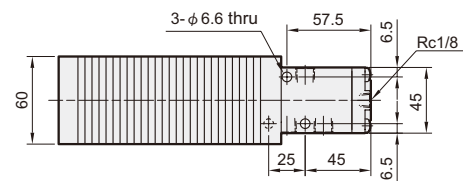
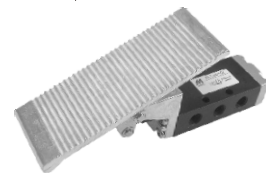
ACT-406-02
ACT-406-03



Treadle valve

ACT-407

ACT-407-02
ACT-407-03

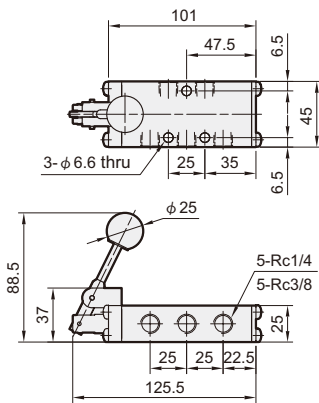


Hand valve

ACT-410

ACT-410-02 / 02-3
ACT-410-03 / 03-3

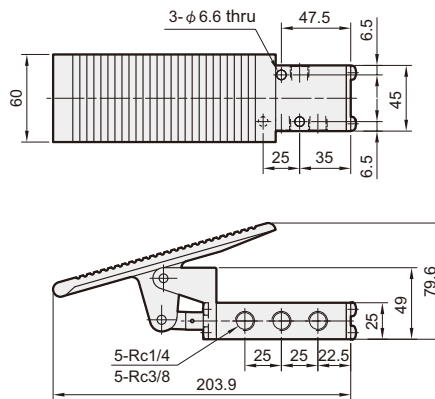
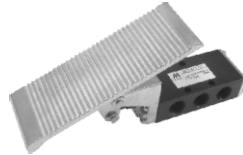
ACT-410-02-31
ACT-410-03-31



Treadle valve

ACT-411

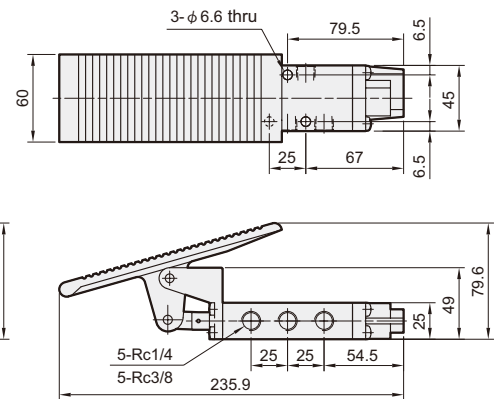
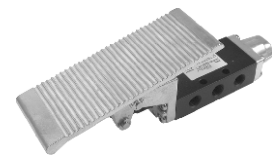
ACT-411-02 / 02-3
ACT-411-03 / 03-3



Treadle valve

ACT-411-A

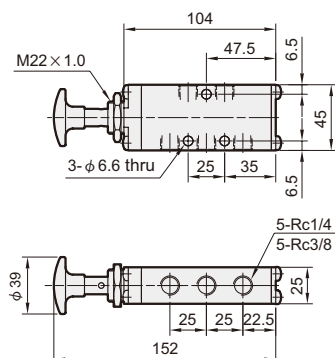
ACT-411-02-3A / 3A1
ACT-411-03-3A / 3A1



Plam valve

ACT-412

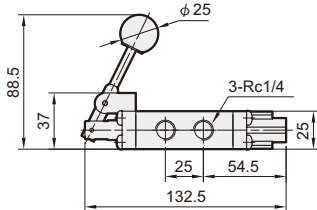
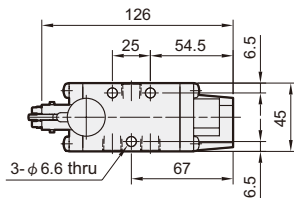
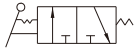
ACT-412-02
ACT-412-03



Hand valve

ACT-301

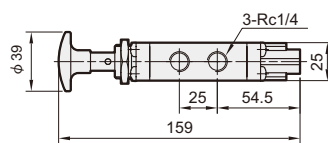
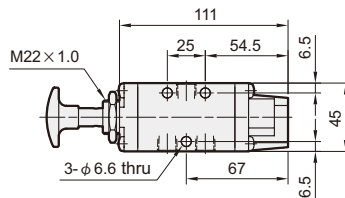
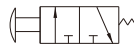
ACT-301-02



Plam valve

ACT-302

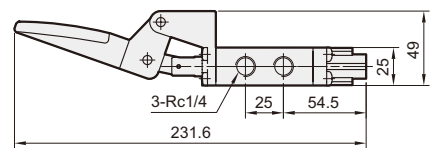
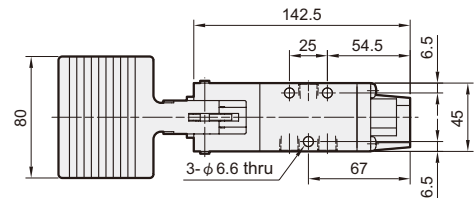
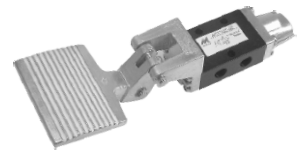
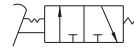
ACT-302-02



Treadle valve

ACT-303

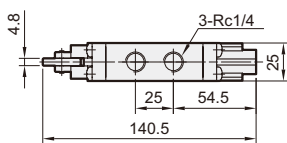
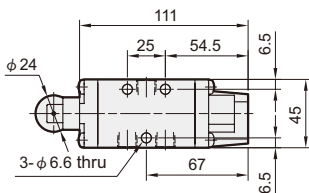
ACT-303-02



Roller plunger valve

ACT-305

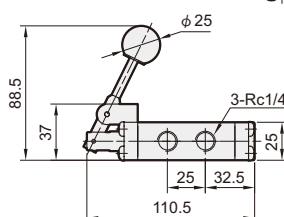
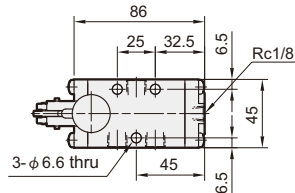
ACT-305-02



Hand valve

ACT-306

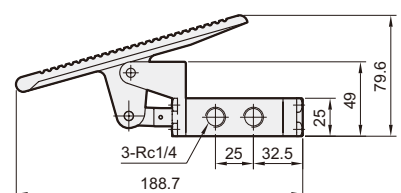
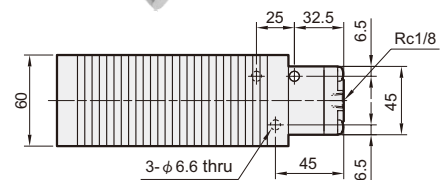
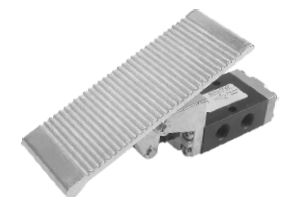
ACT-306-02



Treadle valve

ACT-307

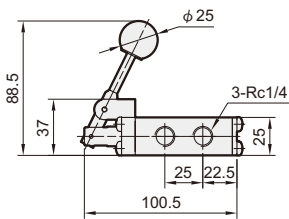
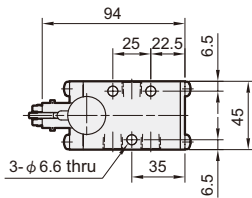
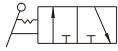
ACT-307-02



Hand valve

ACT-310

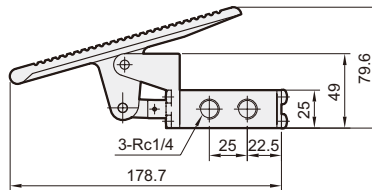
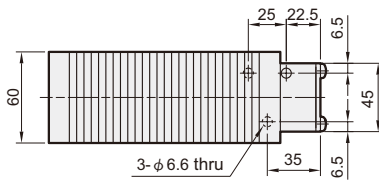
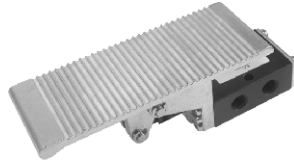
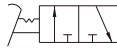
ACT-310-02



Treadle valve

ACT-311

ACT-311-02



Plam valve

ACT-312

ACT-312-02

