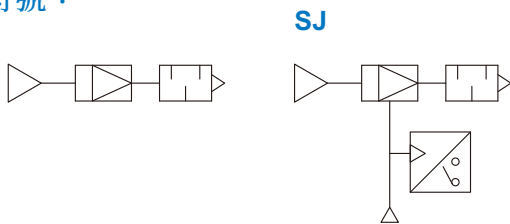


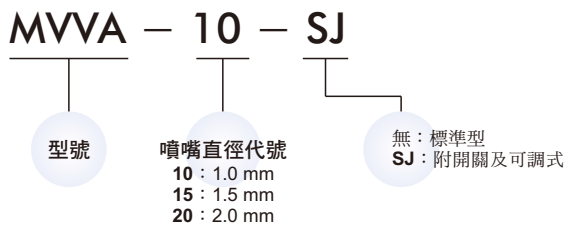
規格：

型號	MVVA-10	MVVA-15	MVVA-20
噴嘴直徑	1.0 mm	1.5 mm	2.0 mm
配管口徑尺寸	G1/8	G1/4	G3/8
使用流體	空氣		
使用壓力範圍	0.1~0.6 MPa		
周圍溫度	0~+60°C (不凍結)		
到達真空度	-91.8 kPa (-690mmHg)		
吸入流量	32 l/min	63 l/min	130 l/min
空氣消耗量	76 l/min	100 l/min	185 l/min
供給空氣壓	0.5 MPa		
信號確認設定範圍 SJ 型式	-20.0 ~ -90 kPa (-150 ~ -680 mm Hg)		
給油	不需給油		
重量 (g)	標準型	84g	294 g
	SJ 型式	110g	321 g

符號：

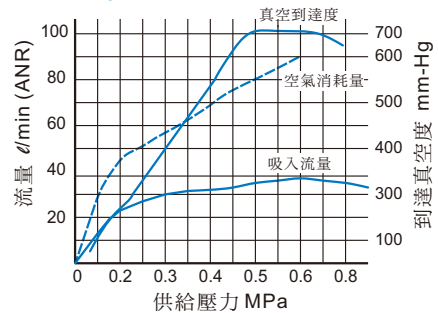


訂購代號：

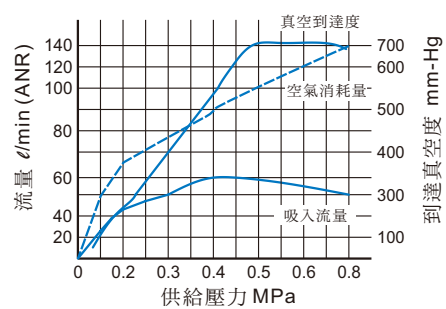


真空特性表：

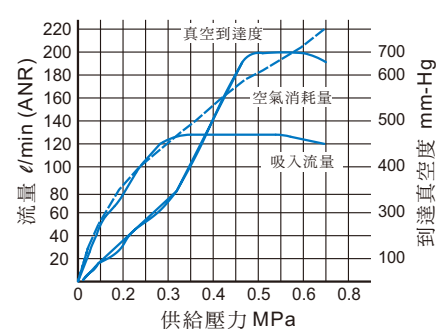
MVVA-10



MVVA-15



MVVA-20



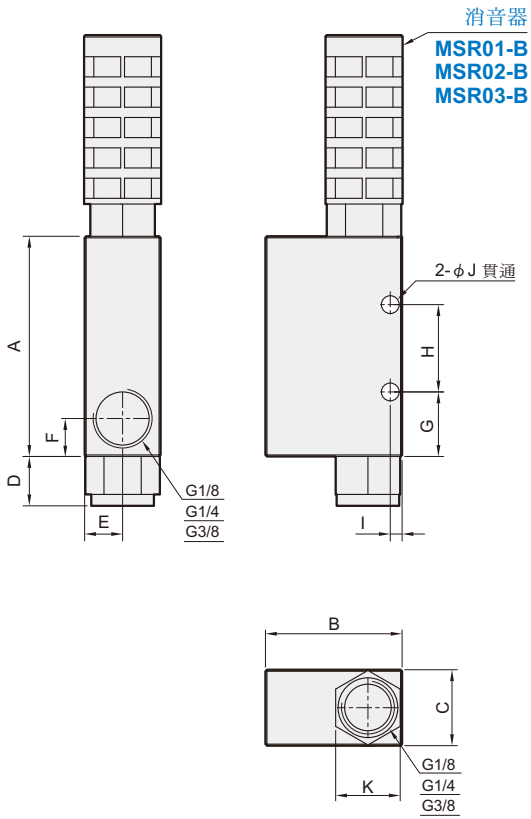
MVVA 外觀尺寸

真空產生器

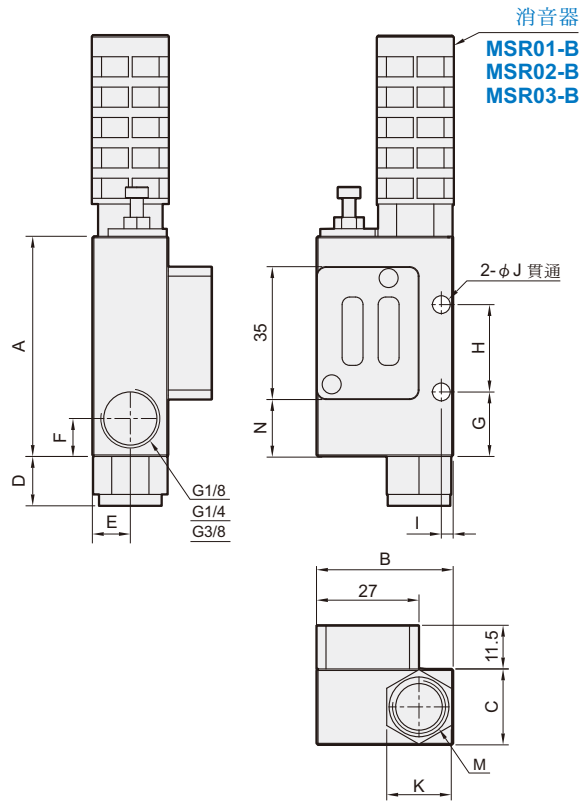


Mindman

MVVA-**-**

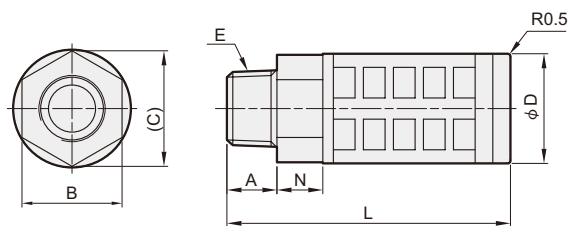


MVVA-**-SJ



代號 型號	A	B	C	D	E	F	G	H	I	J	K	N	M
MVVA-10	55	34	15.5	10	7.75	10	13	18	3	4.5	14	—	G1/8
MVVA-10-SJ	55	34	15.5	10	7.75	10	13	18	3	4.5	14	9	G1/8
MVVA-15	58	36	20	13	10	10	17	23	3	4.5	17	—	G1/4
MVVA-15-SJ	58	36	20	13	10	10	17	23	3	4.5	17	15	G1/4
MVVA-20	75	43	30	18	15	14	23	32	5	5.5	22	—	G3/8
MVVA-20-SJ	75	43	30	18	15	14	23	32	5	5.5	22	30.5	G3/8

MSR*-B



型號	A	B	C	D	E	L	N
MSR01-B	7	14	16.2	16	Rc1/8	33	7
MSR02-B	10	17	19.6	20.3	Rc1/4	63	8.5
MSR03-B	12	24	26.2	26.3	Rc3/8	67.5	11