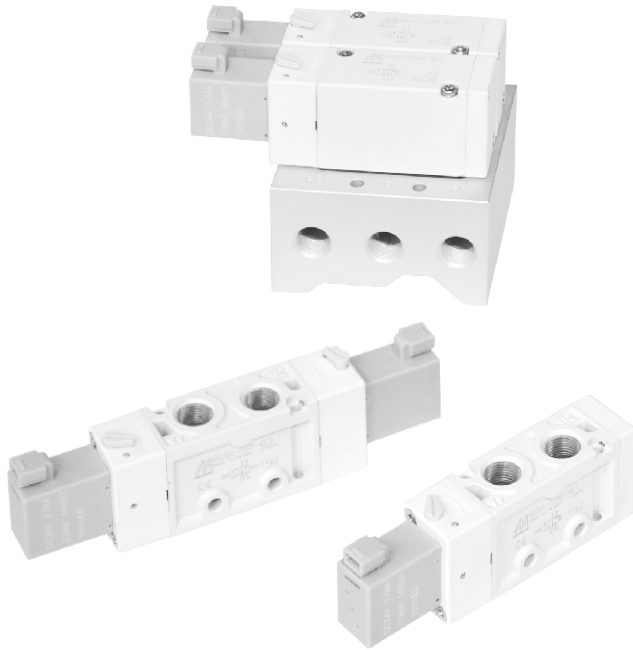


# MVSP-220 系列

電磁閥

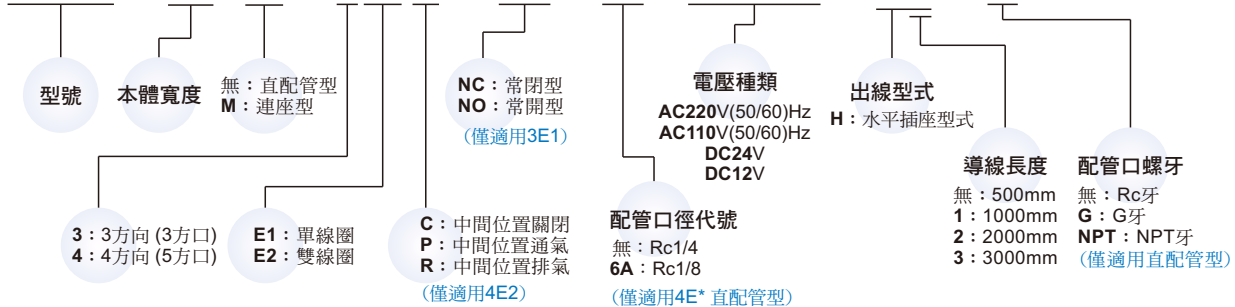


## 規格：

型號	3E1	3E2	4E1	4E2	4E2C.P.R
配管口徑尺寸	Rc1/4		Rc1/8, Rc1/4		
方口數/位置數	3口/2位置		5口/2位置		5口/3位置
使用流體	空氣				
使用壓力範圍	0.2~0.8 MPa			0.3~0.8 MPa	
耐壓力	1 MPa				
有效斷面積	18 mm <sup>2</sup>			16 mm <sup>2</sup>	
周圍溫度	-5~+50℃ (不凍結)				
應答時間	30 ms				
定格電壓	AC110V, 220V (50/60)Hz, DC12/24V				
電力消耗	AC=5VA, 5.5VA(220V), DC=0.95W				
電壓容許範圍	±10%				
絕緣等級	F 級				
重量	86 g	130 g	108 g	152g	198 g

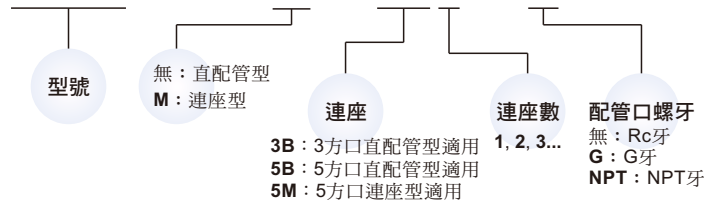
## 閥 / 訂購代號：

MVSP - 220M - 4E2C - NC - □ - AC110 - H1 - G



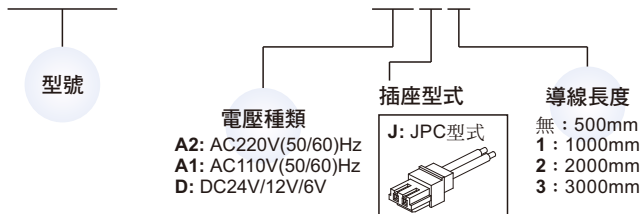
## 連座 / 訂購代號： ※ 與 MVSC 共用連座

MVSC - 220M - 5M3 - G



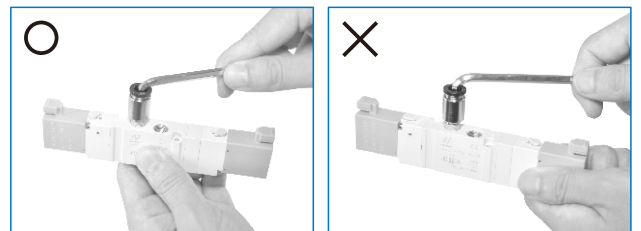
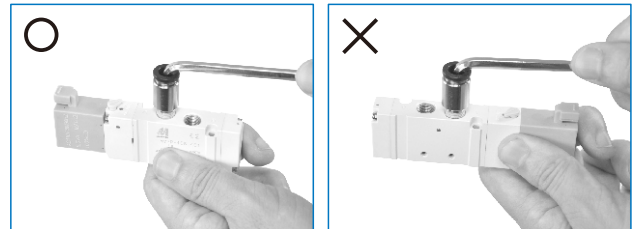
## 導線 / 訂購代號： ※ 與 MVDY 共用導線

MVDY - 100 - WA2J2



## 注意事項：

鎖付接頭時應避免直接施力緊握於線圈，以免損壞。

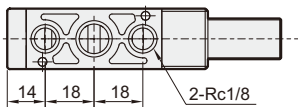
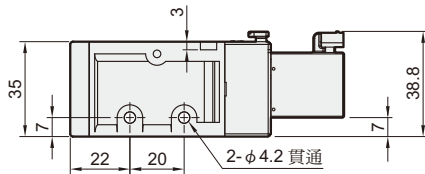
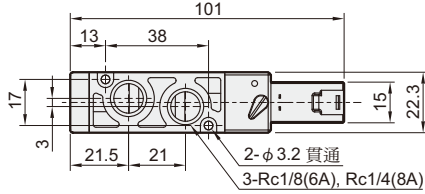
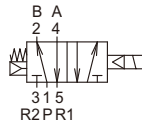


# MVSP-220 外觀尺寸

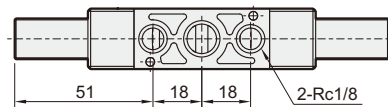
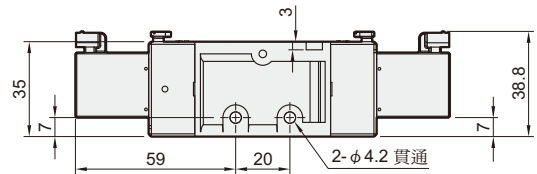
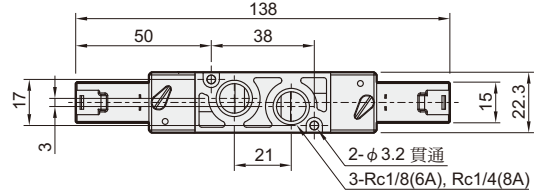
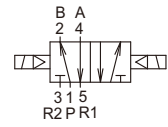
電磁閥



MVSP-220-4E1



MVSP-220-4E2

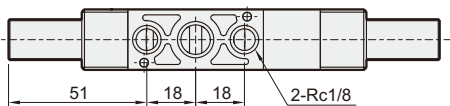
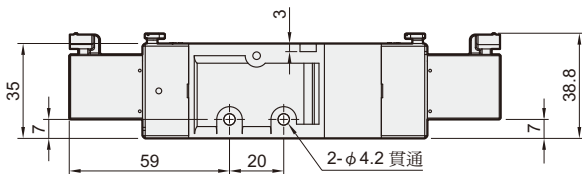
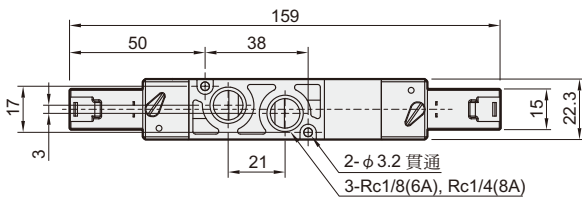
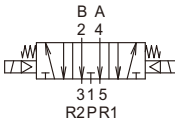
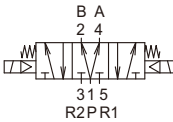
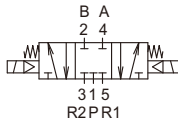


MVSP-220-4E2C.P.R

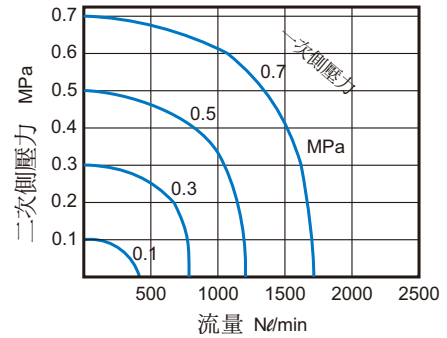
MVSP-220-4E2C

MVSP-220-4E2P

MVSP-220-4E2R



流量特性圖：

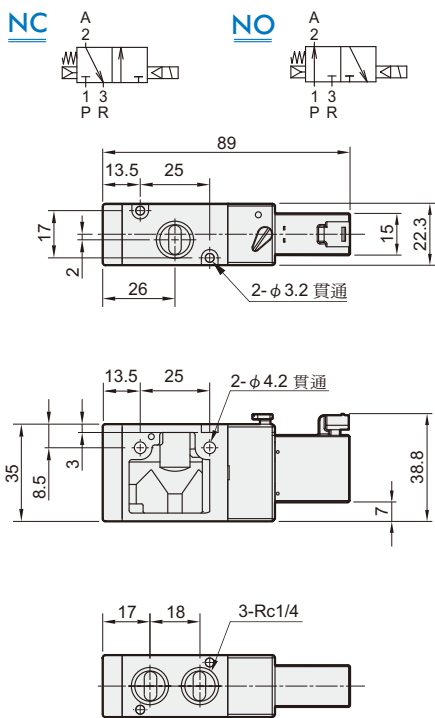


# MVSP-220 外觀尺寸

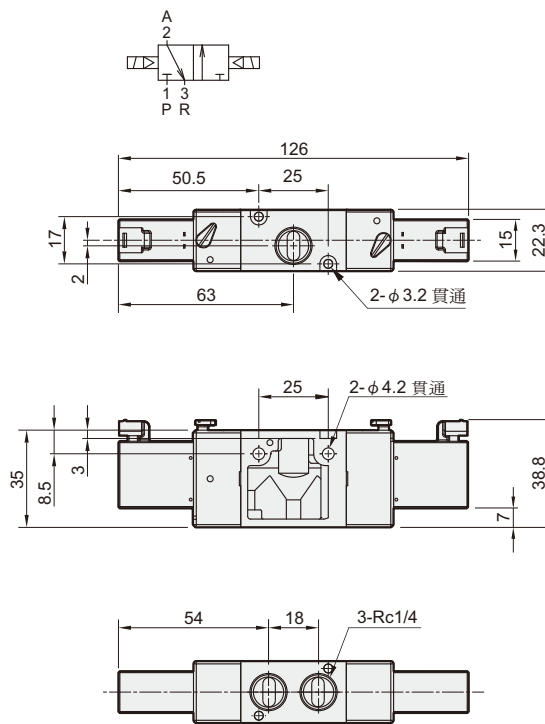
電磁閥



## MVSP-220-3E1-NC/NO

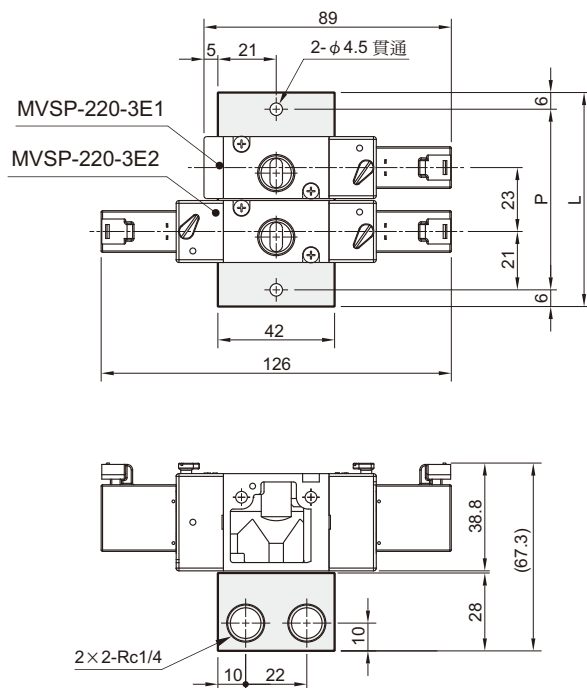


## MVSP-220-3E2



## MVSC-220-3B\*

3方口直配管型用



連座數	P	L
2	65	77
3	88	100
4	111	123
5	134	146
6	157	169
7	180	192
8	203	215
9	226	238
10	249	261

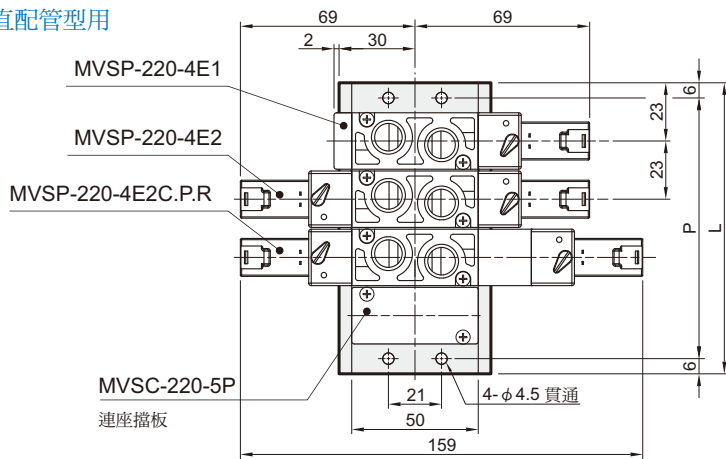
# MVSP-220 連座

電磁閥

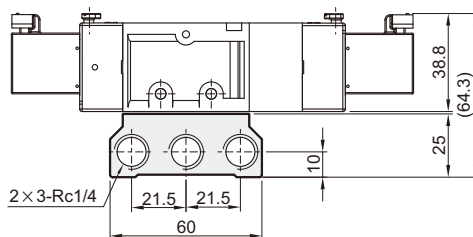


## MVSC-220-5B\*

5方口直配管型用

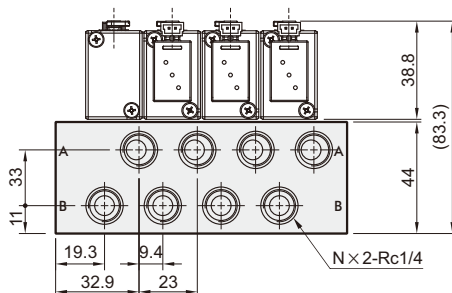
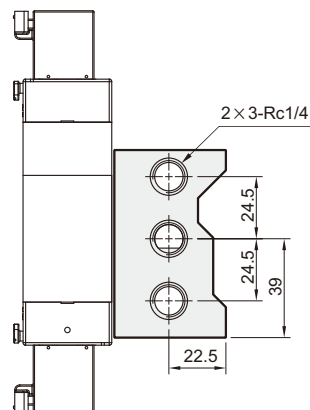
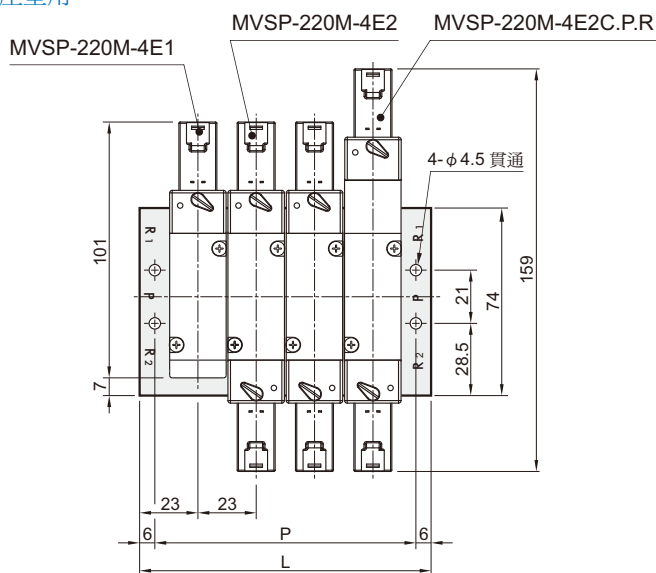


連座數	P	L
2	57	69
3	80	92
4	103	115
5	126	138
6	149	161
7	172	184
8	195	207
9	218	230
10	241	253



## MVSC-220M-5M\*

5方口連座型用



連座數(N)	P	L
2	57	69
3	80	92
4	103	115
5	126	138
6	149	161
7	172	184
8	195	207
9	218	230
10	241	253