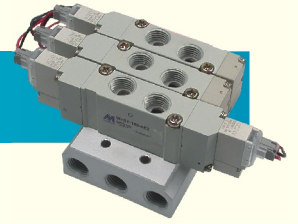


ELECTROVALVULAS 5 vías/3 vías



series MVS* / MVD*

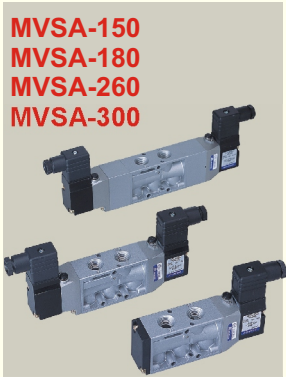
Tipo	3 / 2	5 / 2	5 / 3(C/P/R)	Servo pilotadas	Acción directa	Conector cableado	Conector DIN	Fluido
MVSA	150	●		●		●		Aire
	156	●		●		●	●	
	180	●	●	●		●		
	260	●	●	●			●	
MVSB	300	●	●	●			●	
	180	●	●	●		●		
MVSC/D	188	●	●	●		●	●	
	180	● (NC)	●	●		●		
MVSC	220	● (NC/NO)	●	●			●	
	260		●	●			●	
	300	● (NC)	●	●			●	
	460	● (NC)	●	●			●	
MVSE	260		●	●		●	●	
	300		●	●		●	●	
	500		●	●		●	●	
	510		●	●		●	●	
MVSF	600		●	●		●	●	
	100	● (IC/IA)	●	●		●		
	260		●	●			●	
MVSI	450		●	●			●	
	510		●	●			●	
MVSN	300		●	●			●	
	100		●	●		●		
MVSY	156		●	●		●		
	188		●	●		●		
MVDC	220	● (NC)			●		●	
MVDF	100	● (NC)			●	●		
MVDY	100	● (NC)			●	●		

Además de rosca BSP, NPT y PT también suministrables.

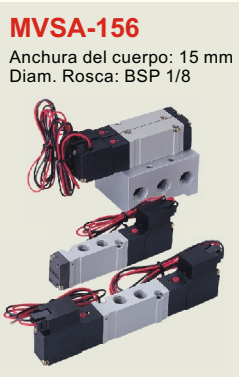
Diámetro de rosca.

- #100:M3, #150:M5, #156:1/8"
- #180:1/8", #188:1/4",
- #220:1/4", #260:1/4", #300:3/8",
- #460:1/2", #500:1/2", #510:1/2",
- #600:3/4", 1" .


MVSA-150
MVSA-180
MVSA-260
MVSA-300



MVSA-156
Anchura del cuerpo: 15 mm
Diam. Rosca: BSP 1/8



MVSB-188
Anchura del cuerpo: 18 mm
Diam. Rosca: BSP 1/4



MVSY-100
MVSY-156
MVSY-188

NUEVO

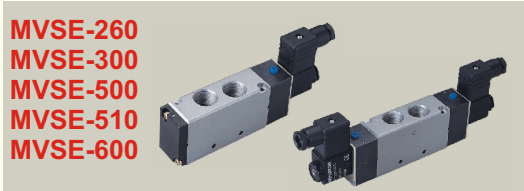


MVSC/D-180
MVSC-220
MVSC-260

MVSC-300
MVSC-460



MVSE-260
MVSE-300
MVSE-500
MVSE-510
MVSE-600



NAMUR
MVSN-300



ISO-1
MVSI-260
MVSI-450
MVSI-510



Tipo de Acción Directa
MVDC-220



Tipo de Acción Directa
MVDF-100
MVDY-100

NUEVO



MVSF-100

